



Connecting your site to Eye-Fi

By using the Gallery 3 Remote Protocol, you can make your site a part of the Eye-Fi ecosystem.

Supporting Photo Uploads:

Following is the link to the Gallery 3 REST API:

<http://codex.gallery2.org/Gallery3:API:REST>

By plugging this API into your existing server, and supporting the simple API methods to authenticate, search for albums, create an album, and upload a photo or a video, your site can become a destination for photos and videos taken with the Eye-Fi Card.

You will need to give your users instructions on selecting the Gallery 3 icon when they are adding a photo and/or video destination for their Eye-Fi enabled device. Users will then have to enter your URL, username and password to create a profile for your site.

G3 REST API endpoints required for integration:

- **Login:** Eye-Fi authenticates the user. For an example look into the "Example Login request" section of the link above.
Request URL: path_to_gallery3/index.php/rest
Parameters required: user, password
- **Get a list of albums** -- Eye-Fi requests a listing of accessible albums/folders for the authenticated user.
Request URL: path_to_gallery3/index.php/rest/item/1
- **Create a new album** -- Eye-Fi creates a new album/folder based on the date the photo was taken (unless one exists or this option has not been configured by the user).
Request URL: path_to_gallery3/index.php/rest/item/1
Parameters: entity=json_encoded_obj that contains album information. Valid elements for json obj are:
type=>album

title=>name of the album
name=>name of the internal dir created in gallery3
description=>description of album

- **Upload a picture or video** -- Eye-Fi uploads a photo or video file to the new album created.

Request URL: The album url is retrieved in step 2 above.

Parameters: entity=json_encoded_obj that contains photo/video information.

Valid elements for json obj are:

type=>image or video

name=>title of the photo/video

description=>description for photo / video.

Testing:

In order to test your own Gallery3 API service, please get one of the open source upload clients that use the API to work with your own service. This link will take you to a list of clients you can try:

http://codex.gallery2.org/Category:Gallery_3:Other_Clients

Supporting Video Uploads:

Please get the photos working first if your site also accepts photos as this will help you with the video uploads.

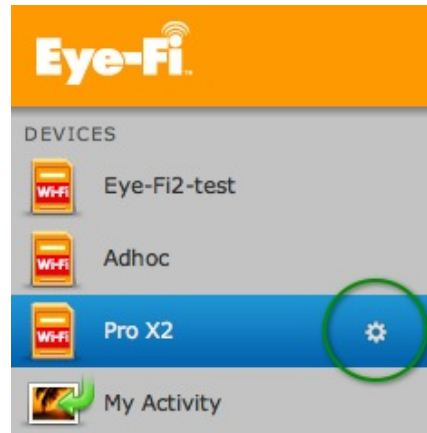
If you are using a standard G3 install, a service will have to install the ffmpeg plugin

(<http://codex.gallery2.org/index.php/Gallery2:Modules:ffmpeg>), which will take care of creating the thumbnails.

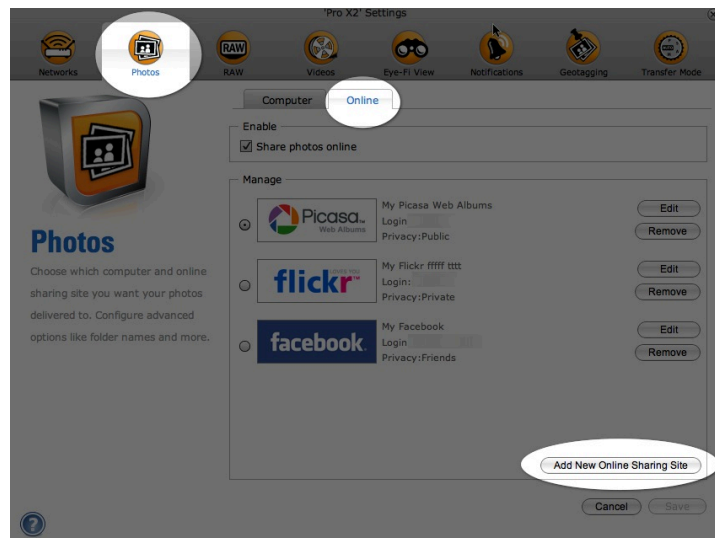
Of course, if you are simply using the G3 rest api with your own code on the back-end, you just need to make sure you can accept large files via POST uploads and have a way to generate the thumbnails and meta-data on your end.

Please refer to these instructions and screenshots to tell your users how to enter your URL and their username and password into Eye-Fi Center:

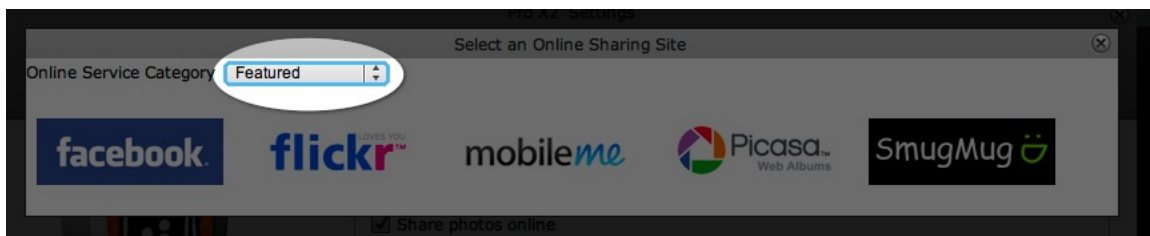
1. Open Eye-Fi Center and click on the Settings wheel near the Eye-Fi card image and name



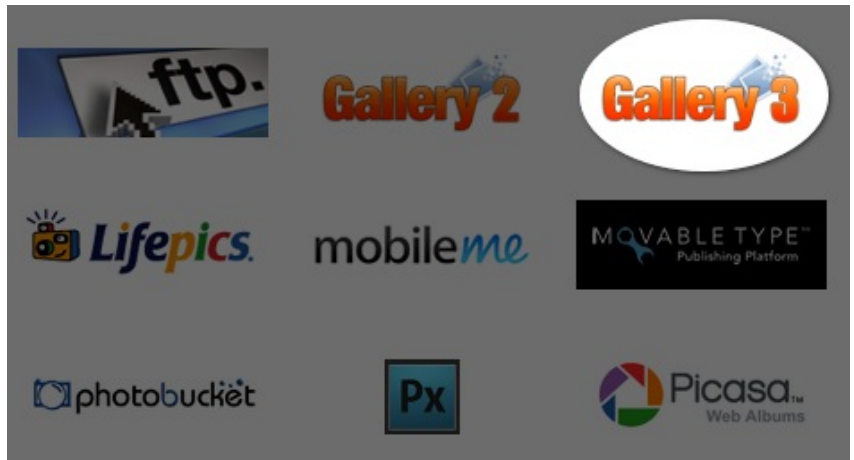
2. Click on the "Photos" tab, then the "Online" sub-tab then the "Add New Online Sharing Site"



3. Click on the drop-down and select "Sharing"



4. Click on the Gallery 3 image



5. Enter the username, password and entire URL for your site. E.g. <http://www.yourcompany.com>

A screenshot of a software dialog box titled 'Select an Online Sharing Site'. The main heading is 'Confirm your Gallery 3 account'. In the top right corner, there is a 'Gallery 3' logo. The dialog contains three input fields: 'Username', 'Password', and 'URL'. These three fields are grouped together and circled in white. Below the input fields is a 'Settings' section with a checkbox labeled 'Upload both photos and videos to Gallery 3'. At the bottom of the dialog, there are three buttons: 'Show advanced options', 'Cancel', and 'Connect card to Gallery 3'.

6. Start taking photos and within a few minutes, you will see the content on your site.